

# User Manual

## Retention Time Standardization Kit

Collection of 40 non-naturally occurring peptides for standardization of retention times in HPLC-MS based proteomics experiments

### Table of Contents

|          |                                    |          |
|----------|------------------------------------|----------|
| <b>1</b> | <b>Introduction</b>                | <b>1</b> |
|          | 1.1. List of Components.....       | 3        |
|          | 1.2. Storage .....                 | 4        |
| <b>2</b> | <b>Experimental Protocol</b>       | <b>5</b> |
| <b>3</b> | <b>Contact Us</b>                  | <b>6</b> |
| <b>4</b> | <b>Product Use &amp; Liability</b> | <b>6</b> |

**Please read the entire Manual before starting your Experiments!**

**Carefully note the handling and storage conditions.**

**For research use only. Not intended for any animal or human therapeutic or diagnostic use.**

## 1 Introduction

Targeted proteomics (e.g. the development of SRM/MRM assays) is dependent on the definition of HPLC retention time (RT) windows for the selected proteotypic peptides.<sup>1</sup> RT window definition is however hampered by the fact that RTs are not easily transferable between different labs and can also considerably vary within laboratories (e.g. on different HPLC-MS instruments).

The best method to define RT windows is through calibration of RTs by standard substances. Although a number of retention time standards have been described, many of them display limitations. Those range from narrow RT windows (meaning that the difference between the RT of the most hydrophilic and of the most hydrophobic peptide is comparably low), limited peptide numbers and restricted usability for column performance evaluation, up to the fact that they often contain naturally occurring sequences prohibiting spike-in into biological samples.

For the generation of an optimized set of peptide RT standards, suitable candidate peptides were identified through an iterative selection process. The process started from 10,000 *in silico* generated non-naturally occurring peptide sequences followed by iterative steps of synthesis and experimental examination by LC-MS/MS on an Orbitrap Fusion Lumos (Thermo) instrument. As result of the comprehensive examination of each peptide, a set of 40 peptides was defined. The peptides were pooled in aliquots of 10 or 100 pmol/peptide to furnish the new Retention Time Standardization Kit.

Figure 1a and 1b show typical LC-MS chromatograms of the peptide kit for two different gradients. The peptides were compiled to yield a broad and even coverage of RTs. In addition, the Retention Time Standardization Kit proved to have good detectability (high Andromeda scores) of each peptide, good LC-MS characteristics (sharp peak shapes), and a high stability of RTs over multiple injections (Figure 1c). Beside its application to RT normalization, the peptide set can also be used for the evaluation of HPLC column performance. This is exemplified in Figure 1d where two pairs of peptides could not be separated on a used column (upper trace) but were separable by using a fresh column (lower trace).

Based on the observed favorable properties, peptides of the Retention Time Standardization Kit were spiked into every of the >1200 peptide pools generated in the course of the ProteomeTools project.<sup>2</sup> This allowed the calculation of RT indices for all peptides of the project thus ensuring the transferability of RTs between laboratories.

In summary, an optimized set of HPLC reference standard peptides was developed that features the following advantages:

- Non-naturally occurring peptides (allowing application in all sorts of biological samples)
- Non-isotopically labeled peptides (facilitating inclusion into database searches)
- Broader LC gradient coverage than other previously described RT calibration sets
- Higher number of peptides than other previously described RT calibration sets
- Very stable RTs across multiple injections
- Use for column performance evaluation
- Use for optimization of LC-MS gradients
- Use for transfer of RTs to other LC systems/gradients/laboratories
- Intensive use in ProteomeTools project

**References**

- [1] Picotti, P. et al., *Nat. Methods* **2012**, 9(6), 555-566.  
 [2] Zolg, D. P. et al., *Nat. Methods* **2017**, accepted.

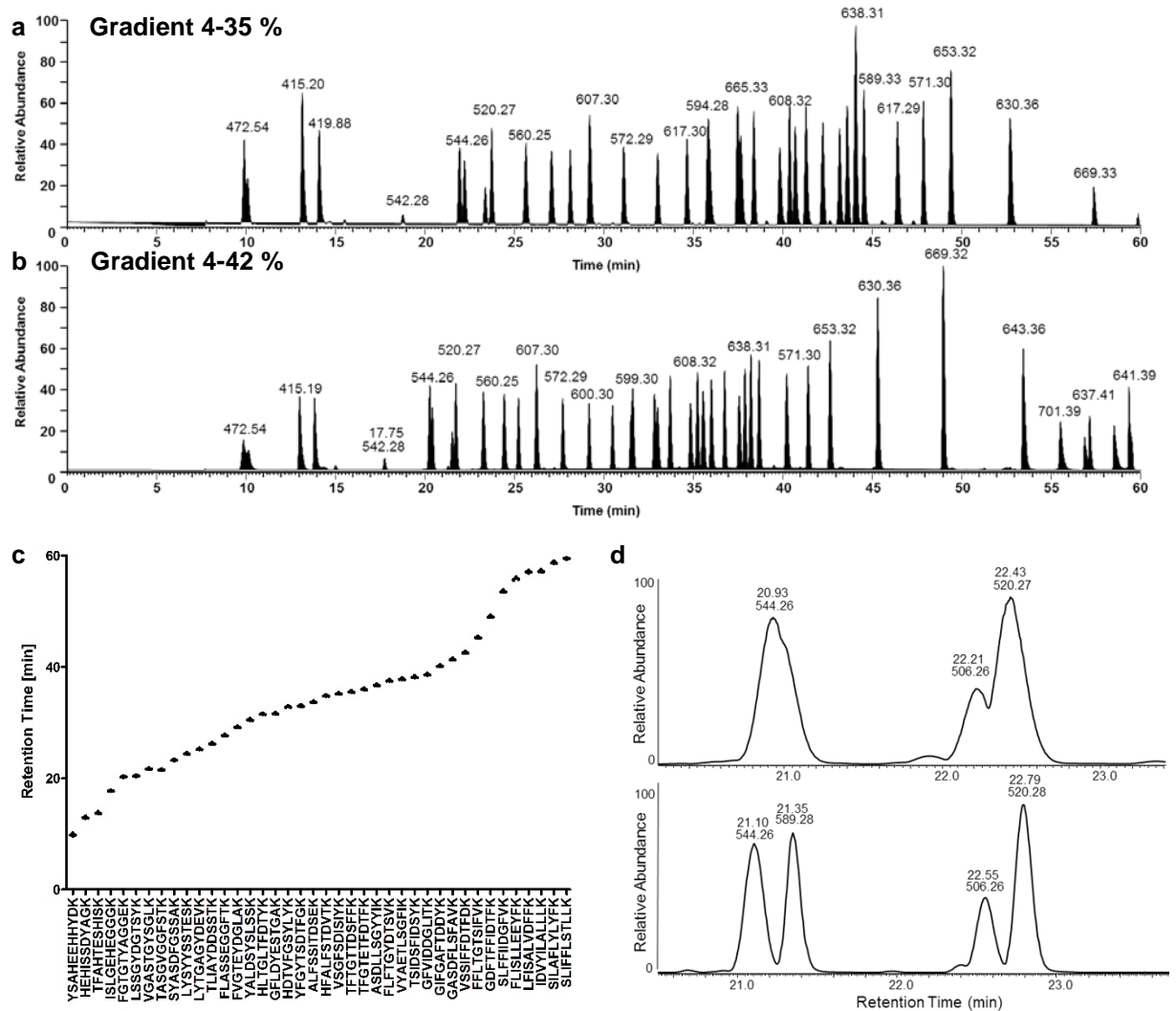


Figure 1: a) Typical LC-MS chromatogram of the Retention Time Standardization Kit using the following LC-MS conditions: 3  $\mu\text{m}$  C18 LC column, column length 47 cm, 60 min gradient, 4 to 35% elution solvent (solvent A: 1% formic acid in  $\text{H}_2\text{O}$ , elution solvent B: 5% DMSO in MeCN). b) Typical LC-MS chromatogram of the Retention Time Standardization Kit using the following LC-MS conditions: 60 min gradient, 4 to 42% elution solvent (solvent A and elution solvent B as above). To ensure the detectability of the most hydrophobic peptides, the Kit was dissolved in 100% DMSO followed by dilution to 10% DMSO immediately before LC-MS/MS measurement. c) RT stability of all peptides of the set over 10 LC-MS injections (all data points shown). d) Representation of the elution peaks of the peptides FGTGT YAGG EK, LSSGYDGTSYK, SYASDFGSSAK and VGASTGYSGLK using a used (top) and a fresh (bottom) HPLC column.

## 1.1 List of Components

Polypropylene vial with a pool of the following peptides:

| No. | Sequence     | M       | [M+H] <sup>+</sup> | [M+2H] <sup>2+</sup> | [M+3H] <sup>3+</sup> | Score* | HI(pred.)** | RT*** |
|-----|--------------|---------|--------------------|----------------------|----------------------|--------|-------------|-------|
| 1   | YSAHEEHYDK   | 1414.59 | 1415.60            | 708.30               | 472.54               | 202.68 | -1.95       | 9.93  |
| 2   | HEHISSDYAGK  | 1242.56 | 1243.57            | 622.29               | 415.19               | 265.82 | 0.26        | 13.01 |
| 3   | TFAHTESHISK  | 1256.61 | 1257.62            | 629.31               | 419.88               | 272.32 | 2.03        | 13.81 |
| 4   | ISLGEHEGGK   | 1082.54 | 1083.54            | 542.28               | 361.85               | 201.46 | 2.31        | 17.76 |
| 5   | LSSGYDGTSYK  | 1176.53 | 1177.54            | 589.27               | 393.18               | 130.10 | 4.46        | 20.47 |
| 6   | FGTGYAGGEK   | 1086.50 | 1087.51            | 544.26               | 363.17               | 141.44 | 4.47        | 20.32 |
| 7   | VGASTGYGLK   | 1038.53 | 1039.54            | 520.27               | 347.19               | 138.76 | 4.89        | 21.76 |
| 8   | TASGVGGFSTK  | 1010.50 | 1011.51            | 506.26               | 337.84               | 151.79 | 5.34        | 21.57 |
| 9   | SYASDFGSSAK  | 1118.49 | 1119.50            | 560.25               | 373.84               | 128.88 | 5.79        | 23.32 |
| 10  | LYSYSSSTESK  | 1326.60 | 1327.61            | 664.31               | 443.21               | 145.28 | 6.16        | 24.47 |
| 11  | LYTGAGYDEVK  | 1214.58 | 1215.59            | 608.30               | 405.87               | 83.18  | 6.97        | 25.28 |
| 12  | TLIAYDDSSSTK | 1212.59 | 1213.60            | 607.30               | 405.20               | 132.32 | 7.37        | 26.28 |
| 13  | HLTGLTFDTPK  | 1294.66 | 1295.66            | 648.34               | 432.56               | 136.96 | 8.61        | 31.59 |
| 14  | FLASSEGGFTK  | 1142.56 | 1143.57            | 572.29               | 381.86               | 117.52 | 8.80        | 27.76 |
| 15  | GFLDYESTGAK  | 1186.55 | 1187.56            | 594.28               | 396.52               | 124.67 | 8.85        | 31.69 |
| 16  | ALFSSITDSEK  | 1196.59 | 1197.60            | 599.30               | 399.87               | 134.30 | 9.04        | 33.75 |
| 17  | FVGTEDYDGLAK | 1198.59 | 1199.59            | 600.30               | 400.54               | 147.74 | 9.24        | 29.24 |
| 18  | YALDSYSLSSK  | 1232.59 | 1233.60            | 617.30               | 411.87               | 145.91 | 9.32        | 30.56 |
| 19  | HDTVFGSYLYK  | 1328.64 | 1329.65            | 665.33               | 443.89               | 236.69 | 9.39        | 32.87 |
| 20  | YFGYTSDFGK   | 1284.57 | 1285.57            | 643.29               | 429.20               | 109.11 | 9.44        | 33.09 |
| 21  | HFALFSTDVTK  | 1264.65 | 1265.65            | 633.33               | 422.56               | 256.96 | 9.73        | 34.89 |
| 22  | TFTGTDSFFK   | 1250.58 | 1251.59            | 626.30               | 417.87               | 139.31 | 11.41       | 35.60 |
| 23  | VSGFSDISIYK  | 1214.62 | 1215.63            | 608.32               | 405.88               | 124.42 | 11.53       | 35.28 |
| 24  | TFGTETFDTPK  | 1292.59 | 1293.60            | 647.30               | 431.87               | 102.40 | 11.98       | 36.07 |
| 25  | TSIDSFIDSYK  | 1274.60 | 1275.61            | 638.31               | 425.87               | 72.29  | 12.01       | 38.25 |
| 26  | ASDLLSGYYIK  | 1228.63 | 1229.64            | 615.32               | 410.55               | 137.89 | 12.11       | 36.80 |
| 27  | FLFTGYDTSVK  | 1276.63 | 1277.64            | 639.32               | 426.55               | 83.862 | 12.33       | 37.61 |
| 28  | GIFGAFDDYK   | 1232.57 | 1233.58            | 617.29               | 411.86               | 115.57 | 12.74       | 40.26 |
| 29  | VYAETLSGFIK  | 1226.65 | 1227.66            | 614.33               | 409.89               | 101.39 | 13.06       | 37.91 |
| 30  | GFVIDDGLITK  | 1176.64 | 1177.65            | 589.33               | 393.22               | 69.72  | 13.26       | 38.68 |
| 31  | GASDFLSFAVK  | 1140.58 | 1141.59            | 571.30               | 381.20               | 138.25 | 14.55       | 41.43 |
| 32  | FFLTGTSIFVK  | 1258.70 | 1259.70            | 630.36               | 420.57               | 152.54 | 15.95       | 45.36 |
| 33  | VSSIFFDTPDK  | 1304.63 | 1305.64            | 653.32               | 435.88               | 121.02 | 16.66       | 42.66 |
| 34  | GDFTFIDTPK   | 1336.63 | 1337.64            | 669.32               | 446.55               | 196.44 | 19.58       | 49.11 |
| 35  | LFISALVDFFK  | 1298.73 | 1299.74            | 650.37               | 433.92               | 115.29 | 22.72       | 57.19 |
| 36  | SLFFIIDGFVK  | 1284.71 | 1285.72            | 643.36               | 429.24               | 133.89 | 22.74       | 53.64 |
| 37  | IDVYILALLLK  | 1272.81 | 1273.81            | 637.41               | 425.28               | 127.83 | 23.47       | 57.27 |
| 38  | SILAFLLYLYFK | 1376.77 | 1377.78            | 689.39               | 459.93               | 134.84 | 23.62       | 58.84 |
| 39  | SLIFFLSTLLK  | 1280.77 | 1281.78            | 641.39               | 427.93               | 129.82 | 23.70       | 59.53 |
| 40  | FLISLLEEFYK  | 1400.76 | 1401.77            | 701.39               | 467.93               | 175.15 | 25.16       | 55.87 |

\* Andromeda score.

\*\* SSRCalcQ: HI (predicted) (100Å C18 column, 0.1 % Formic Acid, <http://hs2.proteome.ca/SSRCalc/SSRCalcQ.html>).

\*\*\* Observed retention time using the following LC-MS conditions: 3 µm C18 LC column, column length 47 cm, 60 min gradient, 4 to 42 % elution solvent (solvent A: 1 % formic acid in H<sub>2</sub>O, elution solvent B: 5 % DMSO in MeCN), average retention time from 11 replicate injections.

## 1.2 Storage

The Retention Time Standardization Kit should be stored at -20°C. Once constituted, it should be stored at 4 °C for short term storage and stored at -20 °C for longer term storage. The constituted kit should be used up within 3 months.

## 2 Experimental Protocol

1. Kit reconstitution (dissolution): In general, the kit is compatible with various LC-MS solvents:
  - a) In case you do not require the six most hydrophobic peptides for your retention time calibration, you can use purely aqueous solutions for dissolution, e. g. 0.1 % formic acid in water.
  - b) In case you prefer to include the six most hydrophobic peptides in your retention time calibration, it is suggested to use an organic co-solvent to resuspend the peptides. 30 % Acetonitrile in water has been successfully tested for resuspension. Alternatively, it was shown that dissolution of the kit in 100 % DMSO followed by dilution to 10 % DMSO immediately before injection is a suitable way to dissolve all peptides.

Add 100  $\mu\text{L}$  of solvent for dissolution of the kit (use this volume for both available sizes – the 100 pmol/peptide kit and the 10 pmol/peptide kit).

2. After addition of the solvent, promote the solubilization process by vortexing the vial for 60 seconds followed by sonication for 30 seconds. This furnishes a 1 pmol/ $\mu\text{L}$ /peptide stock solution (for the 100 pmol/peptide kit) or a 100 fmol/ $\mu\text{L}$ /peptide stock solution (for the 10 pmol/peptide kit) that can be further aliquoted and diluted. It is not recommended to further dilute the stock solutions for storage due to the possibility to experience unspecific binding of peptides to glass and plastic material when stored in low concentrations.
3. For the 100 pmol/peptide kit (stock solution concentration 1 pmol/ $\mu\text{L}$ /peptide) dilute an aliquot of the solution (5  $\mu\text{L}$ ) with your LC-MS solvent A (45  $\mu\text{L}$ ) to obtain a ready to use solution with a concentration of 100 fmol/ $\mu\text{L}$ /peptide.  
For the 10 pmol/peptide kit (stock solution concentration 100 fmol/ $\mu\text{L}$ /peptide) the stock solution is already ready to use for LCMS.
4. Optionally add the solution from step 3 to a sample followed by sample cleanup using established protocols like Stage Tip based reverse phase C18 desalting.
5. Inject the solution from step 3 or 4 into the LC-MS instrument. The optimal amount of peptide to be injected depends on the sensitivity of the used LC-MS instrument. When using a highly sensitive Orbitrap instrument, good signal to noise ratios are obtained with injected amounts of 100-500 fmol/peptide.
6. Use suitable database search software (e.g. Mascot, MaxQuant, Sequest) for data analysis by adding the sequences to your target database or using the fasta file that is provided upon request. If you are using Skyline, you can use the predefined template that can also be provided upon request.

### 3 Contact Us

| Technical Support   | Address   |
|---|---|
| <b>Customer Support</b><br>+49-30-322980-7878<br><a href="mailto:peptide@jpt.com">peptide@jpt.com</a>                         | JPT Peptide Technologies GmbH<br>Hermann-Dorner-Allee 23<br>12489 Berlin<br>Germany |
| <b>Technical Support Europe</b><br>+49-30-322980-7830<br><a href="mailto:peptide@jpt.com">peptide@jpt.com</a>                 | Visit our <a href="#">Website!</a>  |
| <b>Technical Support North America</b><br>1.888.JPT.COM0 (1.888.578.2660)<br><a href="mailto:us-bd@jpt.com">us-bd@jpt.com</a> |   |

### 4 Product Use & Liability

THE PRODUCTS ARE FOR EXPERIMENTAL LABORATORY USE ONLY AND NOT INTENDED FOR HUMAN OR HOUSEHOLD USE.

Only qualified personnel should handle these chemicals.

Note that missing hazard warnings do not indicate that a product is harmless. Products are for research use only (RUO). JPT Peptide Technologies declines responsibility for any damage arising from the inappropriate use of its products.

JPT Peptide Technologies makes no warranties of any kind, expressed or implied extending beyond the description of the product in this brochure, except that the material will meet our described specifications at the time of delivery.

JPT Peptide Technologies makes no warranties regarding experimental results and assumes no liability for injuries, damages, or penalties resulting from product use since the conditions of handling and use are beyond our control.