

User Manual

PepStar™ Peptide Microarrays

Ready-to-use peptide microarrays for humoral immune response profiling and epitope mapping for 1 individual sample

Table of Contents

1. Introduction	1
1.1 About PepStar™ Peptide Microarrays	2
1.2 Peptide Microarray Layout	3
1.3 Assay Principle	5
1.4 List of Components	6
1.5 Storage and Handling	6
Storage of Peptide Microarray Slides	6
Handling of Peptide Microarray Slides	6
1.6 Additional Material Required	7
2. Experimental Protocols	9
2.1. Fully Automated Microarray Processing	9
Workflow for Manual Incubation of PepStar Peptide Microarrays*	11
2.2 Sample Incubation Using a Microarray-chip-sandwich	12
2.2.1 Preparation of the slide environment for easy handling	13
2.2.2 Sample Incubation Using Incubation Trough	16
2.2.2 Detection Antibody Incubation & Post Processing	17
2.2.3 Data Analysis	18
3. Template: PepStar™ Microarray Incubation Protocol	19
4. Troubleshooting & Notes	20
5. Contact Us	22
6. Product Use & Liability	22



Please read the entire manual before starting your experiments!
Carefully note the handling and storage conditions of peptide microarrays.
For research use only. Not intended for any animal or human therapeutic or diagnostic use.

1. Introduction

Antibody-antigen interactions are key events in immunology. Therefore, the identification of epitopes or immunodominant regions in antigens represents an important step in the characterization of antibodies. One of the most efficient ways to identify such epitopes is incubation of a collection of antigen-derived peptides displayed on glass slides (PepStar peptide microarrays) with antibodies of interest.

JPT Peptide Technologies' PepStar peptide microarrays represent customized or catalog peptide microarray slides covering individual or collections of proteins for rapid screening of protein-peptide interactions. The peptides displayed on glass slides are chemoselectively and covalently bound, enabling effective interaction with binding partners. Immobilized sequences represent overlapping peptides derived from single or multiple antigens as well as epitope and random peptide collections allowing efficient profiling of humoral immune responses using patient samples and protein-protein interaction studies. In addition, full proteome PepStar microarrays are available covering overlapping peptide scans through complete microbial or viral proteomes. Upon incubation with your protein or patient sample the binding event can be detected by fluorescently labelled primary or secondary (2nd) antibody.

1.1 About PepStar™ Peptide Microarrays

JPT Peptide Technologies' PepStar™ peptide microarrays comprise synthetic peptides, derived from antigens (principle of epitope detection see Figure 1) or other sources that are chemoselectively and covalently immobilized to the glass surface. An optimized hydrophilic linker moiety is inserted between the glass surface and the peptide sequence to avoid false negatives caused by sterical hindrance. For technical reasons all peptides contain a C-terminal glycine.

JPT's PepStar™ peptide microarrays are designed for detecting potential biomarkers for infectious diseases, autoimmune diseases, cancer and allergies and to elucidate protein-protein interactions. Each spot in the microarray represents a single individual peptide.

After incubation of the peptide microarray with an analyte, a fluorescently labelled detection molecule is used for signal readout.

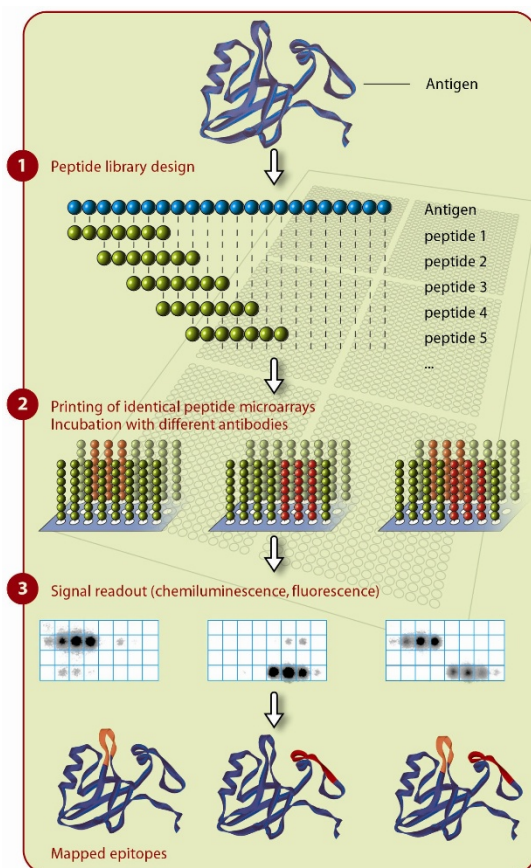


Figure 1: General principle of epitope detection using overlapping peptide scans.

If not ordered otherwise all peptides are displayed in three identical subarrays on each slide. PepStar™ slide surfaces are delivered in a pre-treated form minimizing unspecific binding of your target sample. Therefore, usually no blocking step is needed.

1.2 Peptide Microarray Layout

Please refer to the .gal-file provided with the product documentation for identity and location of the spots on the microarray surface. The microarray side carrying the engraved label represents the surface displaying the attached peptides. The .gal-file can be opened using microarray evaluation software-modules capable of evaluating high-density microarray slides or for simple analysis by JPT's Microarray Feature Viewer. Since .gal-files are tab-separated text files, they can also be accessed by text-processing software such as Microsoft Editor (Notepad) or Microsoft Excel. With the .gal-file provided, evaluation can be performed using software modules like GenePix, ArrayPro or similar programs, which align the .gal-file induced grid onto the resulting image. Additionally, JPT's Microarray feature viewer (part of data files sent by customer support) may be applied for layout visualization, spot identification and feature extraction using any conventional modern web browser. A schematic and exemplary layout of a PepStar peptide microarray is shown in Figure 3.

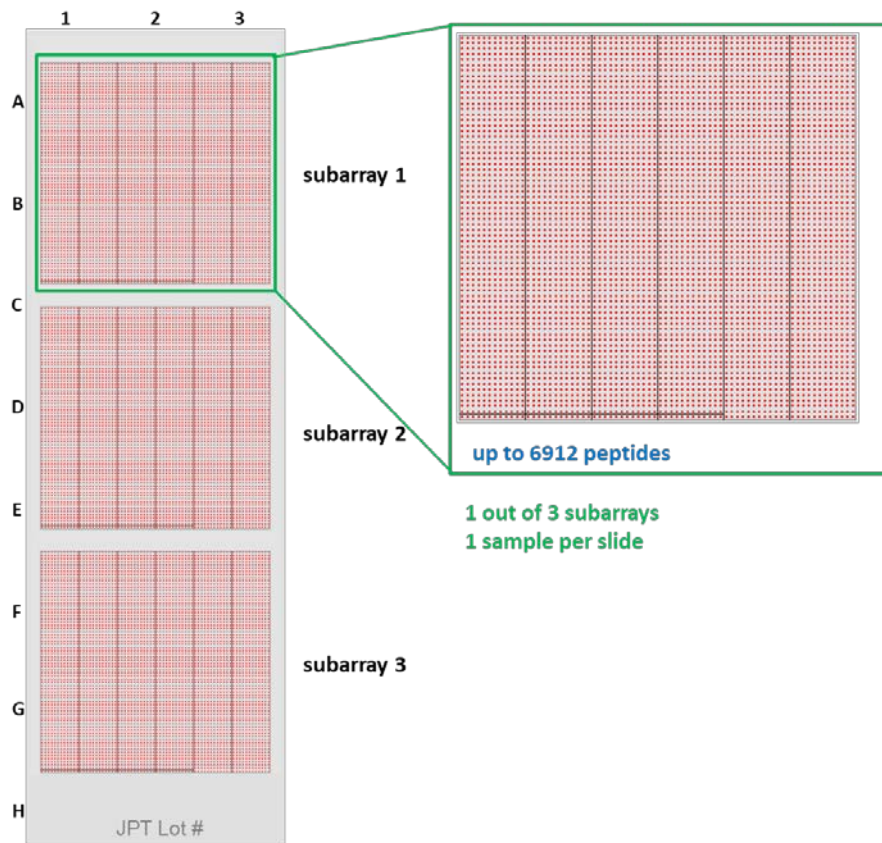


Figure 3: Schematic layout of a PepStar peptide microarray.

As shown in 3 the peptide microarray is printed in three identical subarrays. This enables highly efficient intra-chip-reproducibility tests using scatter plots or correlation functions.

For PepStar microarrays, each subarray is printed in individual blocks (see Figure 4). The number of blocks and the final layout will vary according to the final number of peptides.

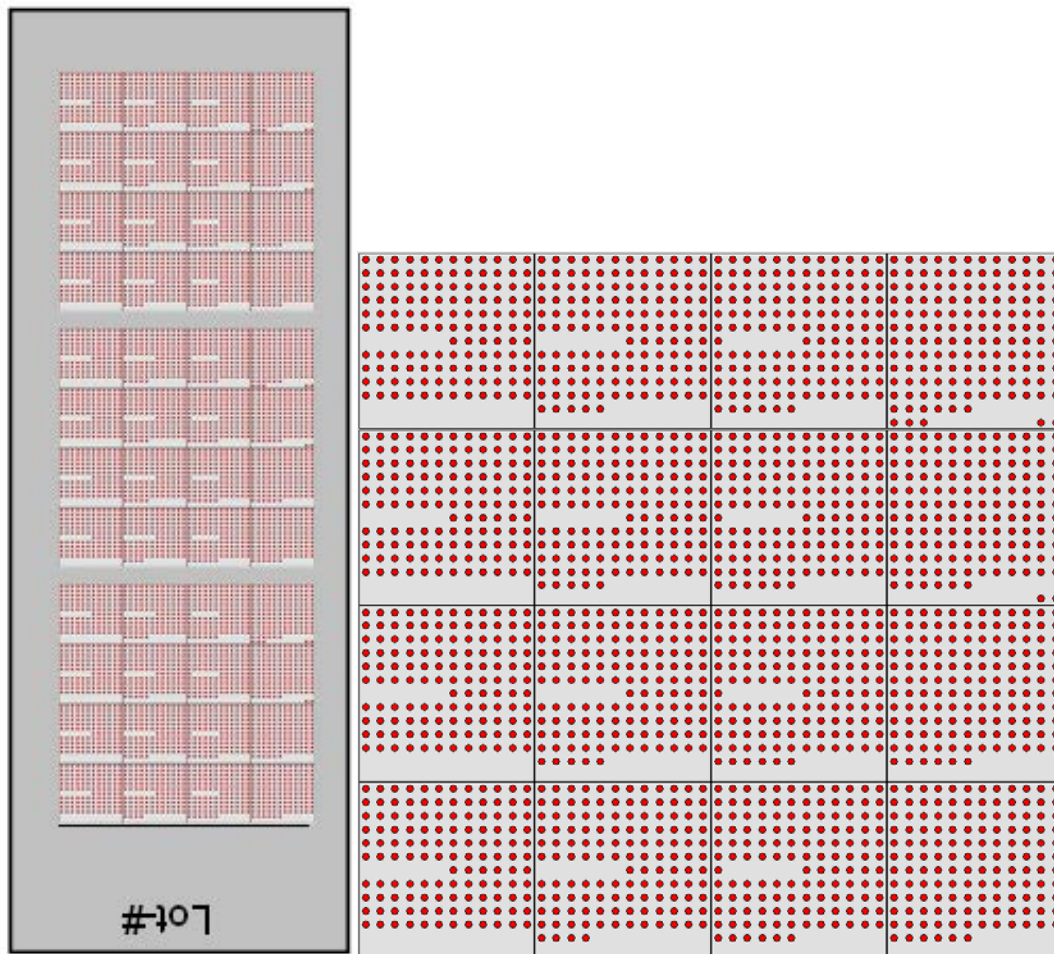


Figure 4: Exemplary view for a PepStar microarray slide with 3 subarrays (left) and a subarray consisting of 16 individual blocks (right).

1.3 Assay Principle

The most common application of JPT's PepStar peptide microarrays is the epitope mapping procedure (Figure 1). A schematic view of the assay principle is shown in Figure 2.

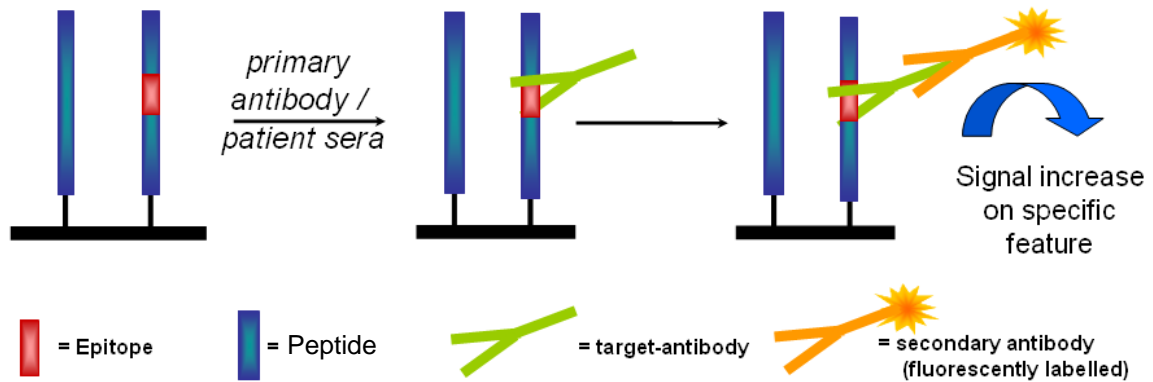


Figure 2: Peptide microarray assay principle.

The peptide microarray is incubated using a primary antibody or patient sample – e.g. serum, plasma or saliva – for a defined time. This enables the formation of stable peptide-antibody interactions. Subsequent to this incubation, the fluorescently labelled secondary antibody is applied. Bound to the peptide-bound primary antibodies, the fluorescence label of the secondary antibody enables readout of antibody interaction by microarray scanning systems. Each spot that shows an interaction with the primary antibody will gain signal in the resulting scan-image.



It is crucial to perform control incubations in order to distinguish between real signals and false positives. To avoid false positive signals induced by peptide-secondary antibody interaction, JPT recommends performing regular control incubations using secondary antibodies only. In addition, JPT recommends performing control incubations applying unrelated primary antibodies to check for false positive signals induced by interaction of peptide with Fc-fragment of the primary antibody.



For seroscreening application JPT recommends checking the secondary antibody for selectivity and specificity. Signals induced by cross-reactivity of secondary antibodies directed against IgG towards IgM or IgE may result in false positive results.

1.4 List of Components

Component	Quantity
PepStar™ Peptide Microarray	Glass slide displaying peptides in three identical subarrays. Quantity according to your order.
Blank slides engraved with “Blank”	One blank slide per Peptide Microarray.
JPT Microarray Spacers	20 pc per vial. Number of vials according to number of ordered microarray slides .
Product Documentation	Relevant data files (protocol and datasheet as pdf-file and sequence info as gal-file and JPT's Microarray Feature Viewer as zipped package).

1.5 Storage and Handling

Storage of Peptide Microarray Slides

- Optimal storage conditions for peptide microarray slides are in a cool (approx. 4°C / 39°F) and dry environment.
- Peptide microarrays are stable for at least 6 months when stored at 4°C (39°F).
- **Do not freeze** the peptide microarrays.

Handling of Peptide Microarray Slides

- Always handle the peptide microarrays with care.
- Never touch the peptide microarray slide surface.
- Always wear powder-free laboratory gloves when handling peptide microarray slides.
- Hold peptide microarray slides at the end with the engraved data label, with the data label face up. This label provides a unique identification of the specific microarray.
- Take care when dispensing solutions onto the slide surface. Make sure not to touch the surface with pipette-tips or dispensers.
- Inappropriate chemicals may destroy the chemical bonding of the peptides to the glass surface. Never use chemicals with corrosive activity.
- Usage of strong alkaline or acidic solutions should be avoided.
- Avoid dust or other particles during each step of the experiment. Dust, particles and resulting scratches will cause artifacts during the final signal readout.
- Filter all solutions for the washing steps through minimum 0.2 µm particle filters before use (preferably even 0.4µm particle filters).

1.6 Additional Material Required

Additional Reagents

Component	Recommendation & Remarks
Primary antibody	Final concentration of about 1 µg/ml.
Proteins / enzymes	For analysis of e.g. protein binding components, JPT recommends a final concentration of 0.1 µg/ml or above.
Blood sera or plasma solution	Final sample dilution of 1:100 to 1:500 in blocking reagent or assay buffer.
Secondary antibody	<p>Fluorescently labeled secondary antibody.</p> <p>JPT recommends use of conjugates with far-red emitting fluorescent dyes (DyLight 649/AlexFluor 647/Cy5 or similar). Blue and green fluorescence emitting dyes are not recommended due to background issues.</p> <p>Detection antibody should be titrated to determine optimal working dilution providing a maximal signal-to-noise ratio with a minimal background binding. The default working concentration (used by JPT) is 1 µg/ml (for antibody epitope mapping) and 0.1 mg/ml (for screening of antibody responses in sera).</p>
Optional: Labeling Kit for Proteins / Antibodies	For direct labeling of proteins or antibodies JPT recommend to use the following kit: DyLight 650 Microscale Antibody Labeling Kit (ThermoFisher Scientific; 84536). Please follow the instruction of use delivered together with the kit for preparing your sample.
Blocking buffer	For sample dilution JPT recommends usage of Superblock T20 buffer (Thermo/Pierce, #37516) or alternatives like e.g. 3% BSA in 1x TBS-Buffer + 0.1% Tween20 (TBS-T).
Washing buffer	1x TBS-Buffer + 0.1% Tween20 (TBS-T).
De-ionized water	For final washing steps of the microarrays.

Additional Hardware & Software

Component	Recommendation & Remarks
Tweezers	For handling of all PepStar™ Peptide Microarrays
Automated incubation/ hybridization station	Tecan Hybridization Station HS4X00 Note: Alternatively, a microarray incubation sandwich can be used. Please refer to this manual for further details.
4-Well Dish, Microscope Slide Staining Dish or 50 mL-Falcon Tubes (Incubation trough)	For manual incubation and washing steps.
Rocking platform	For all manual incubation and washing steps (Note: Do not shake Microarray-Chip-Sandwiches).
Microarray centrifuge	Or access to a stream of nitrogen to dry the microarray slides.
Fluorescence scanner/imager	Capable of excitation of appropriate fluorophore moiety and with a pixel size of at least 10 µm.
Software	Allowing quantification of the image and the assignment of signal intensities to individual peptides using the enclosed gal-file.

2. Experimental Protocols



The following procedure is given as a guideline only. The optimal experimental conditions will vary depending on your sample and instruments and can, therefore, not be predetermined. The optimal experimental conditions must be established by the user. No warranty or guarantee of performance using this procedure with your target antibody or serum can be made or is implied.

2.1. Fully Automated Microarray Processing

All PepStar peptide microarrays produced by JPT have an identical layout concerning active area and spotted surface. Although the content of the microarrays varies, the overall layout and dimensions are the same (see Figure 5).



Please check with the manufacturer of your microarray processing station for compatibility with the required liquids. Most microarray processing stations are sensible towards strong acids and organic solutions. Protocols have to be adapted to prevent permanent damage to your device.

All peptide microarrays produced by JPT are adjusted to fit into common fully automated microarray processing systems. JPT recommends using Tecan HS4X00 Hybridisation systems. All PepStar microarrays are printed according to the layout of the Single chamber option of Tecans HS4X00 Pro station.

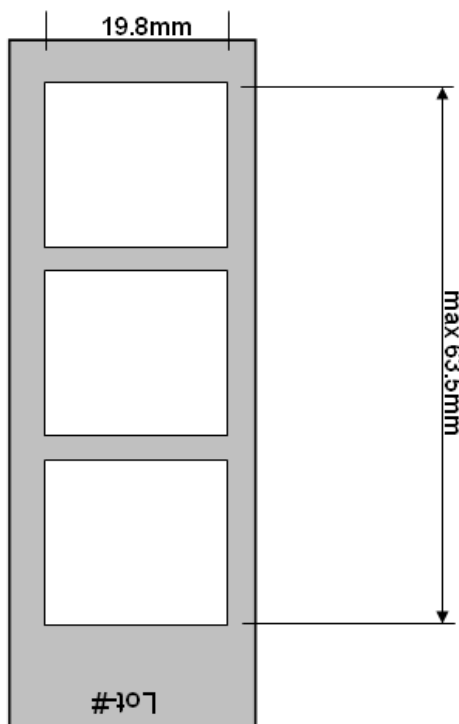


Figure 5: Maximum area dimension on JPT peptide microarrays.

An exemplary protocol for the use of JPT's PepStar peptide microarrays in Tecan's HS4X00 processing machine is shown Figure 6.













-  1 WASH: Temp. °C: 30.0, First: Yes, Ch.: 1, Runs: 3, Wash time: 0:02:00, Soak time: 0:03:00
-  2 PROBE INJECTION: Temp. °C: 30.0
-  3 HYBRIDIZATION: Temp. °C: 30.0, Agitation Frequency: Medium, Time: 0:30:00
-  4 WASH: Temp. °C: 30.0, First: No, Ch.: 1, Runs: 2, Wash time: 0:02:30, Soak time: 0:02:30
-  5 PROBE INJECTION: Temp. °C: 30.0
-  6 HYBRIDIZATION: Temp. °C: 30.0, Agitation Frequency: High, Time: 2:00:00
-  7 WASH: Temp. °C: 30.0, First: No, Ch.: 2, Runs: 3, Wash time: 0:02:30, Soak time: 0:00:30
-  8 PROBE INJECTION: Temp. °C: 30.0
-  9 HYBRIDIZATION: Temp. °C: 30.0, Agitation Frequency: High, Time: 0:45:00
-  10 WASH: Temp. °C: 30.0, First: No, Ch.: 2, Runs: 5, Wash time: 0:02:00, Soak time: 0:00:00
-  11 WASH: Temp. °C: 30.0, First: No, Ch.: 5, Runs: 1, Wash time: 0:02:30, Soak time: 0:01:30
-  12 SLIDE DRYING: Temp. °C: 30.0, Time: 0:04:00, Final Manifold Cleaning: No, Ch.: No

Figure 6: Exemplary method for incubation of JPT's PepStar microarrays in Tecan HS4X00 processing machines:

Ch.: 1 and 2: TBS buffer, 0.1% Tween20

Ch.: 5: 0.1x SSC buffer

Step 1: Pre-wash and filling of incubation chambers

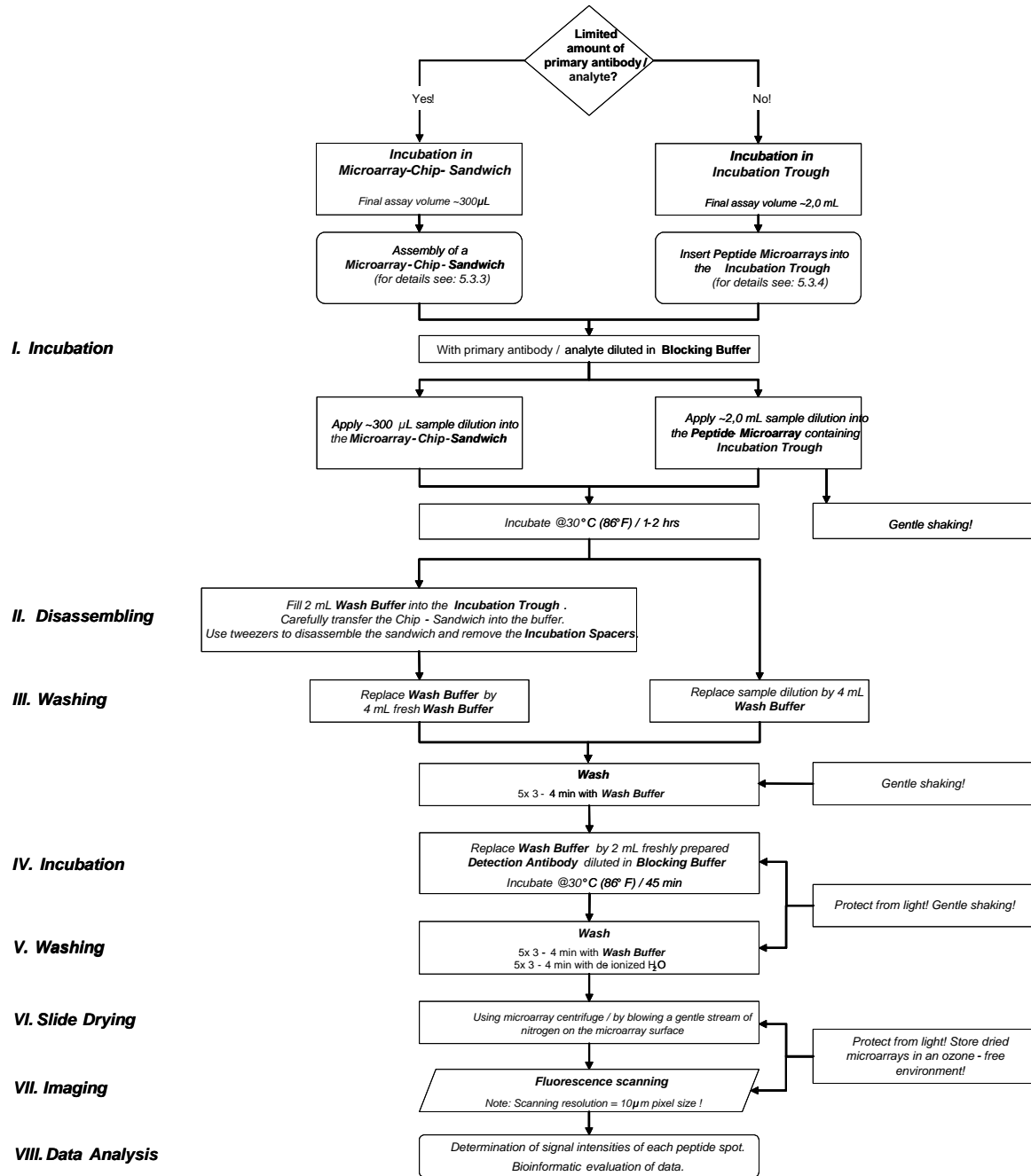
Step 2-4: Blocking procedure

Step 5-7: Incubation with primary antibody/sera

Step 8-10: Incubation with secondary antibody

Step 11: Final washing steps

Step 12: Slide drying procedure

Workflow for Manual Incubation of PepStar Peptide Microarrays*


* For the design of a PepStar experiment, the attached PepStar Microarray Incubation Protocol (see point 6) can be used.

2.2 Sample Incubation Using a Microarray-chip-sandwich

To create a simple incubation chamber, two slides, one displaying the peptides and another slide (*Blank-slide*) without peptides, are assembled according to Figure 3 in a sandwich like format. Alternatively, two peptide carrying slides can be assembled to form an incubation chamber allowing further quality control of the experiment. Please make sure that in such a case the two peptide-displaying sides are facing each other. The two slides are separated by two spacers.

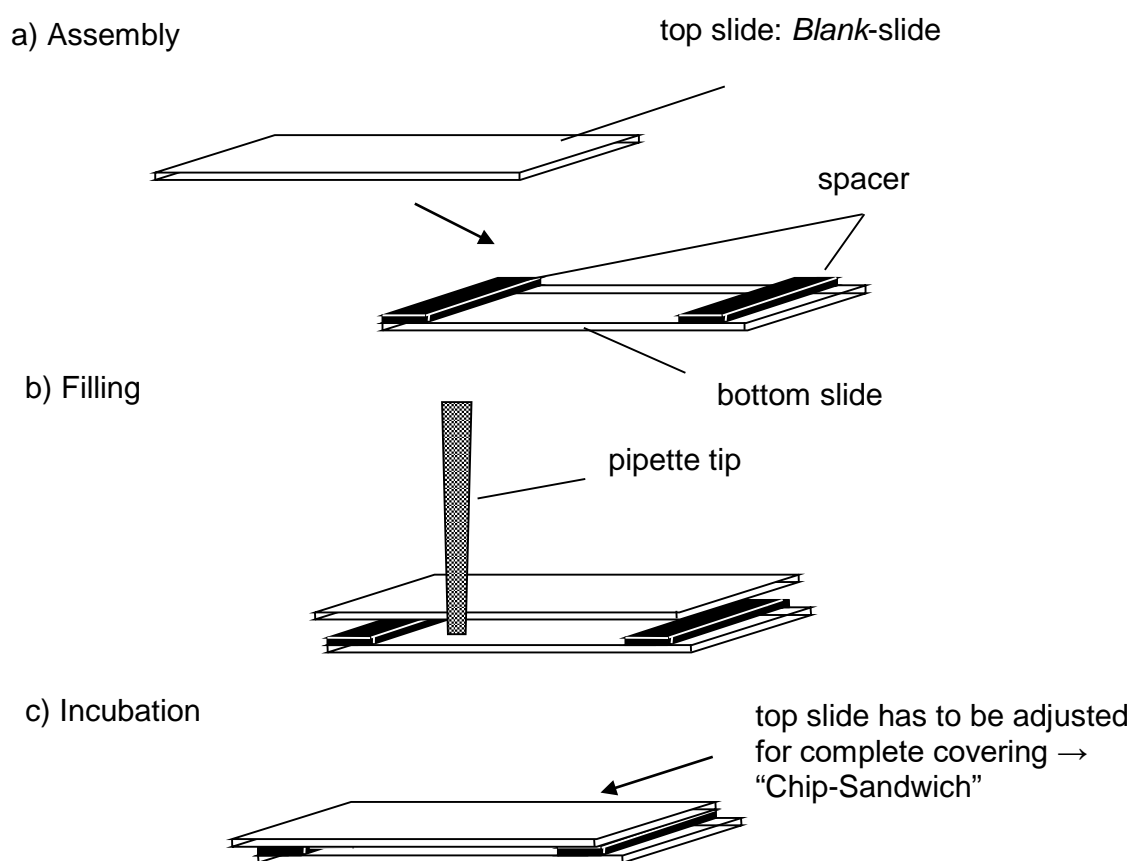


Figure 3: Microarray incubation using microarray-chip-sandwich.

a) For assembly of “Chip-Sandwich” two plastic spacers are placed between the peptide displaying microarray (bottom slide) and the Blank-slide or second peptide displaying microarray (top slide) resulting in a defined reaction chamber.

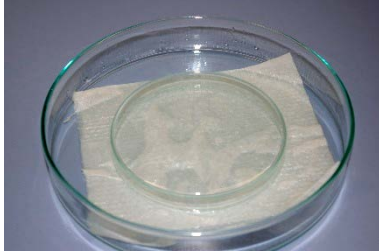
b) Assay solution is applied via pipette tip into the reaction chamber formed by the two slides. Capillary forces will soak-in the solution without formation of bubbles.

c) Top microarray is shifted resulting in overlaying ends of the glass slides. This arrangement enables convenient disassembly after the incubation step.

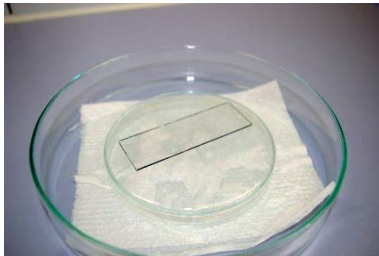
The sample has to be applied in between the two slides. Therefore, the top slide is shifted about 1 mm in relation to the bottom side. If the pipette tip is adjusted on the position directly over the uncovered bottom slide the capillary forces allow proper distribution of the sample solution without formation of bubbles.

2.2.1 Preparation of the slide environment for easy handling

- 1. Wet-chamber assembly:**

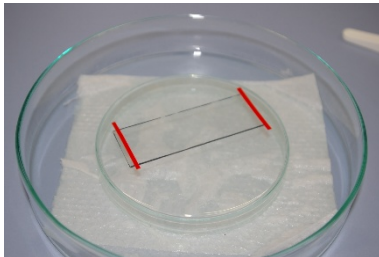


- 2. Placement of the peptide microarray slide support plate facing upward:**

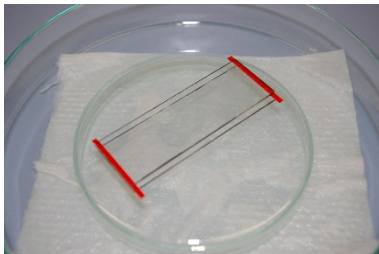


Engraved label has to be readable from top.

- 3. Placement of enclosed spacers on both ends of the microarray:**



- 4. Assembling of the microarray sandwich:**



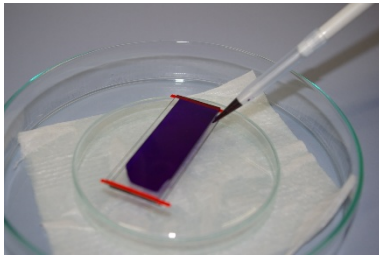
See also 3.2

If two peptide microarrays are used make sure that peptide displaying sides are facing each other.

- 5. Preparation of final assay solution containing target antibody/analyte**

Approx. 300 μ L if enclosed spacers are used.

6. **Pipetting of the complete volume into microarray chip sandwich:**

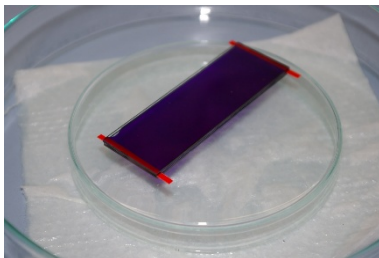


Capillary forces will suck the solution in between the two slides. Avoid air bubbles within the sandwich.



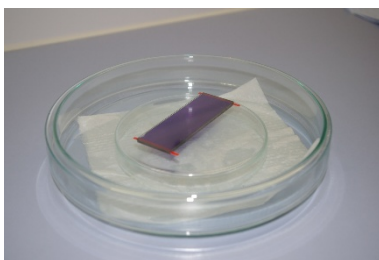
Make sure not to touch the microarray with the pipette tip. Scratches and marks on the surface may destroy the deposited microarray and will cause artifacts!

7. **Adjustment of the peptide microarray sandwich:**



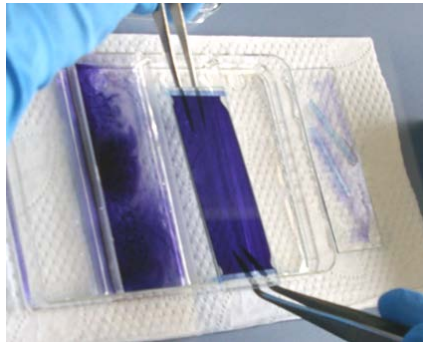
As described in point 3.2 and Figure 3.

8. **Closing of the Petri-dish with a matching cover to create an incubation chamber:**

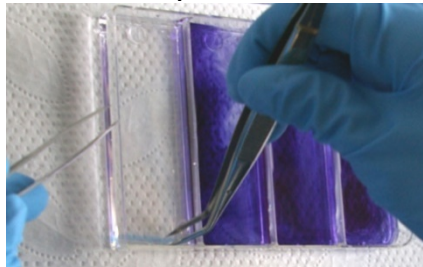


JPT does not recommend use of fluorescently labeled primary or secondary antibodies in microarray sandwich-like incubations.

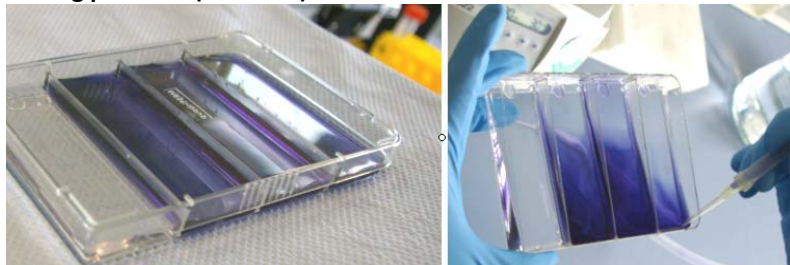
9. Transfer the microarray-chip-sandwich into the wash buffer containing incubation trough after sample incubation is finished



10. Removing of the blank-slide and Incubation Spacers



11. The following wash and incubation steps are performed in the incubation trough under gentle shaking on a rocking platform (see 5.3.5)



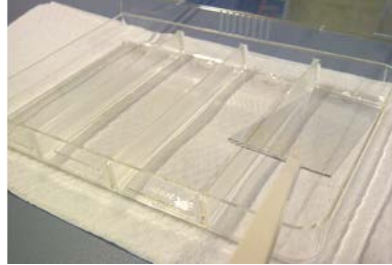
Remove sample dilutions and wash solutions by aspiration. Protect all incubation steps containing fluorescently labeled samples or antibodies from light!



Ensure that microarrays are properly washed with enough liquid rinsing over the slide. Do not allow the microarray slides to dry until the last washing step of the incubation procedure!

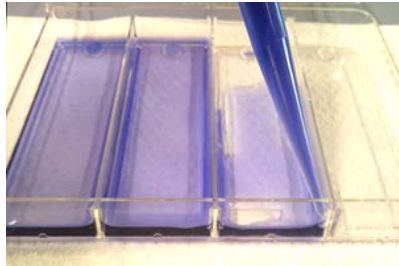
2.2.2 Sample Incubation Using Incubation Trough

1. **Placement of the peptide microarray slides in the incubation trough**



Engraved label has to be readable from top!

2. **Addition of the sample dilution**

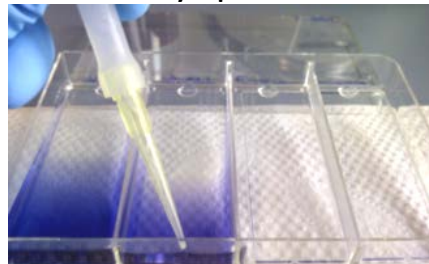


Not directly on the microarray slide surface, but in one edge of the incubation trough!

3. **Close the lid and incubate microarray slides for the appropriate time at the desired temperature**

Gentle shaking!

4. **Remove sample dilutions and wash buffers by aspiration**



Ensure that microarrays are properly washed with enough liquid rinsing over the slide. Do not allow the microarray slides to dry until the last washing step of the incubation procedure!

2.2.2 Detection Antibody Incubation & Post Processing



Independent of the method used for the sample incubation, JPT recommends to incubate the microarray slides with the fluorescently labeled detection antibody by using an incubation trough!

1. **After sample incubation, Washing and Washbuffer removing, add fluorescently labeled Antibody**

Not directly on the microarray slide surface, but in one edge of the incubation trough!

2. **Close the lid and incubate the microarray slides for the appropriate time at the desired temperature**

Gentle shaking! Protect all incubation steps containing fluorescently labeled samples or antibodies from light!

3. **Remove labeled antibody and wash buffers by aspiration**

4. **Perform a final wash step with deionized Water to remove all salt residues**

5. **Drying the microarray slides using a microarray centrifuge or by blowing a gentle stream of a nitrogen on the microarray surface**

6. **Perform fluorescence scans of microarray slides according to scanner type and laser settings corresponding to the fluorescence label of the detection antibody**



Since fluorescence dyes are affected by direct light, ozone and other environmental conditions, please make sure to scan the slides immediately after incubation. If longer storage of incubated slides is required, please seal the slides using inert gas in a dark and dry microarray box.

2.2.3 Data Analysis

For details about application and modification of .gal files, refer to the protocol: " Microarray Feature Viewer Help " enclosed to the Microarray Feature Viewer.

1. Generation of a list containing signal intensities of each peptide spot by means of microarray evaluation software.
2. Calculation of the mean value for the signal intensities of spots with identical peptides (three identical spots per subarray).
3. The highest values indicate the spots displaying peptides recognized most effectively by your antibody.
4. Create heatmap or bar-plot diagram for visualization and identification of major binding sites (examples see Figure 8).

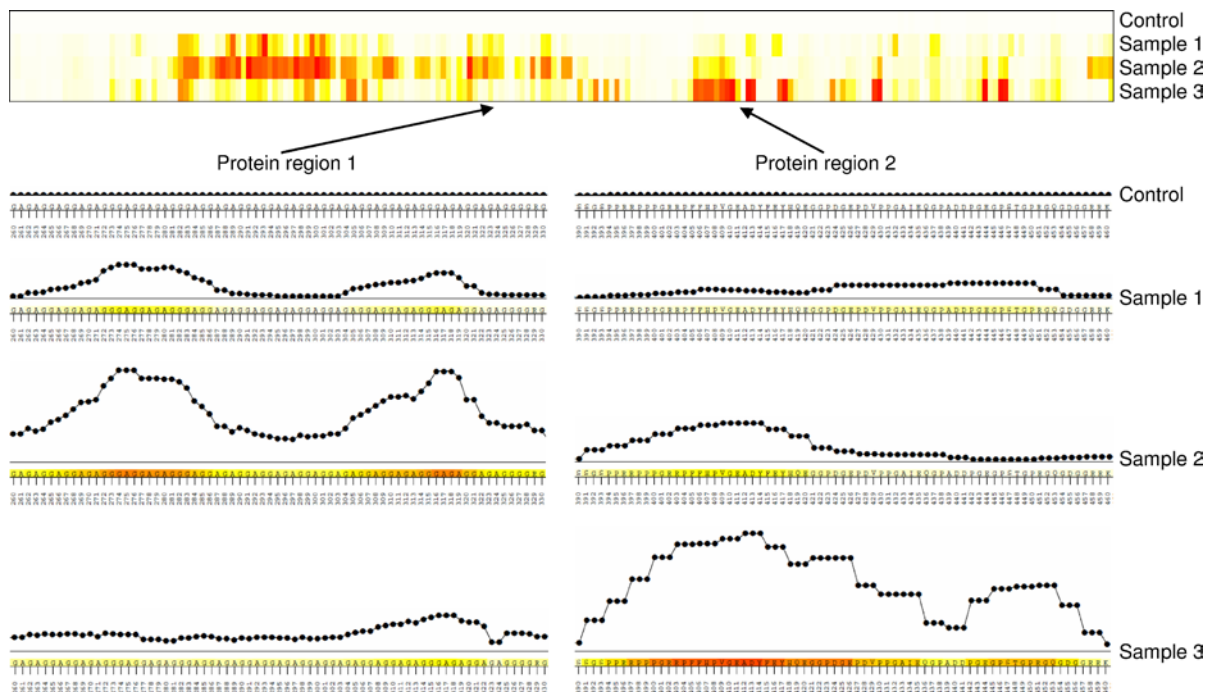


Figure 8: Microarray incubation using microarray-chip-sandwich.

The numerical data were processed using JPT's proprietary evaluation and visualization bioinformatics tools. Upper panel: visualization of results by heatmap diagram. The peptides are sorted on the x-axis according to their position in the scanned protein. Lower panel: for two regions of protein, the contribution of each individual residue to the epitope recognized was calculated using information from overlapping peptides.

3. Template: PepStar™ Microarray Incubation Protocol

General Information	Experiment-#:
	Experiment Title:
	PepStar Name:
	Date:
	Operator:
	Comments:

	PepStar Slide-#:				
I. Incubation	1st Antibody / Analyte				
	Stock concentration				
	Assay concentration				
	Diluent				
	Volume Primary Sample [μl]				
	Volume Diluent [μl]				
	Incubation Temperature				
	Incubation Time				

ii.	Disassembling	
------------	----------------------	--

iii.	Washing	
	TBS-T	

IV. Incubation	2nd Antibody / Analyte				
	Stock concentration				
	Assay concentration				
	Diluent				
	Volume Primary Sample [μl]				
	Volume Diluent [μl]				
	Incubation Temperature				
	Incubation Time				

v.	Washing	
	TBS-T	
	ddH2O	

vi.	Slide Drying	
------------	---------------------	--

vii.	Scanning Parameters:	
	Resolution:	
	Data management:	
	Comments:	

4. Troubleshooting & Notes

Problem	Cause	Solution
Artifacts	<ul style="list-style-type: none"> Dust particles and resulting scratches 	<ul style="list-style-type: none"> Avoid dust or other particles during each step of the experiment Use filtered buffers and solutions only
High background	<ul style="list-style-type: none"> Nature of the sample Sample / 2nd antibody concentration Insufficient washing Contaminated wash buffer 	<ul style="list-style-type: none"> Direct fluorescently labeled proteins tend to induce background signals via unspecific binding to the slide surface. Changing of buffer conditions in the incubation step can reduce background signals very efficiently Additional washing steps can reduce non-specific binding Variation of blocking buffers (initial blocking steps are not recommended by JPT) Increased concentrations of sample / 2nd antibody may yield high background signals caused by unspecific binding to the slide surface Adjustment of washing conditions All buffers and solutions should be prepared freshly every day
Saturated peptide spots	<ul style="list-style-type: none"> Concentration of the 2nd antibody Scanning conditions 	<ul style="list-style-type: none"> Higher dilution rates of the 2nd antibody Adjustment of scanning parameters
Unspecific signals	<ul style="list-style-type: none"> Nature of the sample Insufficient washing Specificity of the 2nd antibody 	<ul style="list-style-type: none"> Variation of blocking buffers Adjustment of washing conditions Control incubations using labeled 2nd antibody alone should be performed in parallel to the actual experiment to ensure that found signals are not caused by non-specific binding of the

2nd antibody to the immobilized peptides

Little or no signals

- Incubation time
 - Bleaching effects
 - Scanning conditions
- Warranty of sufficient incubation time
 - During the incubation step with fluorescently labeled 2nd antibody, protect the slides from light!
 - After application of secondary antibody keep slides in an ozone-free environment
 - Adjustment of scanning parameters

5. Contact Us

Technical Support	Address
Customer Support +49-30-322980-7878 peptide@jpt.com	JPT Peptide Technologies GmbH Hermann-Dorner-Allee 23 12489 Berlin Germany
Technical Support Europe +49-30-322980-7830 peptide@jpt.com	Visit our Website!
Technical Support North America 1.888.JPT.COM0 (1.888.578.2660) us-bd@jpt.com	

6. Product Use & Liability

THE PRODUCTS ARE FOR EXPERIMENTAL LABORATORY USE ONLY AND NOT INTENDED FOR HUMAN OR HOUSEHOLD USE.

Only qualified personnel should handle these chemicals.

Note that missing hazard warnings do not indicate that a product is harmless. Products are for research use only (RUO). JPT Peptide Technologies declines responsibility for any damage arising from the inappropriate use of its products.

JPT Peptide Technologies makes no warranties of any kind, expressed or implied extending beyond the description of the product in this brochure, except that the material will meet our described specifications at the time of delivery.

JPT Peptide Technologies makes no warranties regarding experimental results and assumes no liability for injuries, damages, or penalties resulting from product use since the conditions of handling and use are beyond our control.