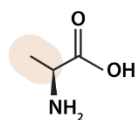
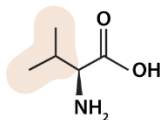


Amino Acid Chart

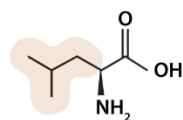
Non-polar side chains, uncharged, hydrophobic



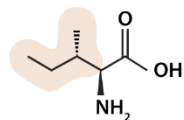
Alanine (Ala, A)
MW: 89,09
pl: 6,01
C3H7N1O2



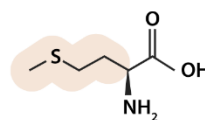
Valine (Val, V)
MW: 117,15
pl: 6,00
C5H11N1O2



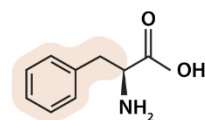
Leucine (Leu, L)
MW: 131,17
pl: 6,01
C6H13N1O2



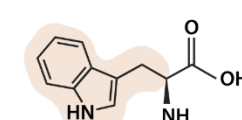
Isoleucine (Ile, I)
MW: 131,17
pl: 6,05
C6H13N1O2



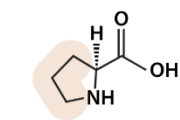
Methionine (Met, M)
MW: 149,21
pl: 5,74
C5H11N1O2S1



Phenylalanine (Phe, F)
MW: 165,19
pl: 5,49
C9H11N1O2



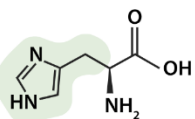
Tryptophan (Trp, W)
MW: 204,23
pl: 5,89
C11H12N2O2



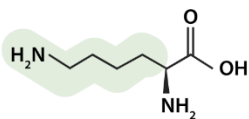
Proline (Pro, P)
MW: 115,13
pl: 6,30
C5H9N1O2

Electrically charged side chains

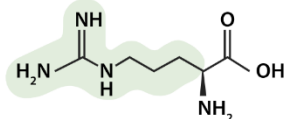
Basic



Histidine (His, H)
MW: 155,16
pl: 7,60
C6H9N3O2

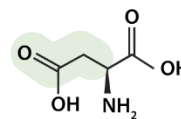


Lysine (Lys, K)
MW: 146,19
pl: 9,60
C6H14N2O2

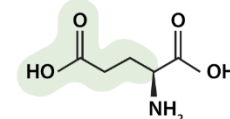


Arginine (Arg, R)
MW: 174,20
pl: 10,76
C6H14N4O2

Acidic

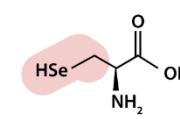


Aspartic Acid (Asp, D)
MW: 133,1
pl: 2,85
C4H7N1O4



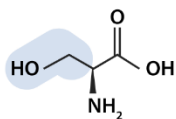
Glutamic Acid (Glu, E)
MW: 147,13
pl: 3,15
C5H9N1O4

Special amino acids

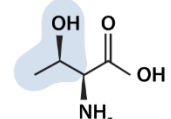


Selenocysteine (Sec, U)
MW: 168,07
pl: 3,9
C3H7N1O2Se

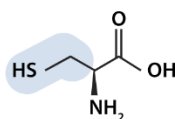
Polar side chains, uncharged



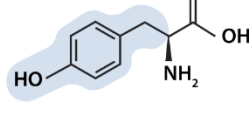
Serine (Ser, S)
MW: 105,09
pl: 5,68
C3H7N1O3



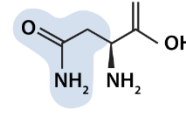
Threonine (Thr, T)
MW: 119,12
pl: 5,60
C4H9N1O3



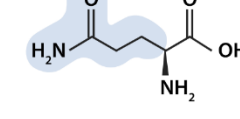
Cysteine (Cys, C)
MW: 121,16
pl: 5,05
C3H7N1O2S1



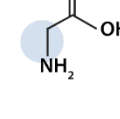
Tyrosine (Tyr, Y)
MW: 181,19
pl: 5,64
C9H11N1O3



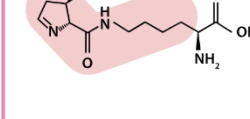
Asparagine (Asn, N)
MW: 132,12
pl: 5,41
C4H8N2O3



Glutamine (Gln, Q)
MW: 146,15
pl: 5,65
C5H10N2O3



Glycine (Gly, G)
MW: 75,07
pl: 6,06
C2H5N1O2



Pyrrolysine (Pyl, O)
MW: 255,31
pl: 6,06
C12H21N3O3



Peptide
Synthesis
Service

We produce over 1 million peptides per year!
ISO 9001:2015 certified

<https://www.jpt.com/>
peptide@jpt.com
© JPT Peptide Technologies