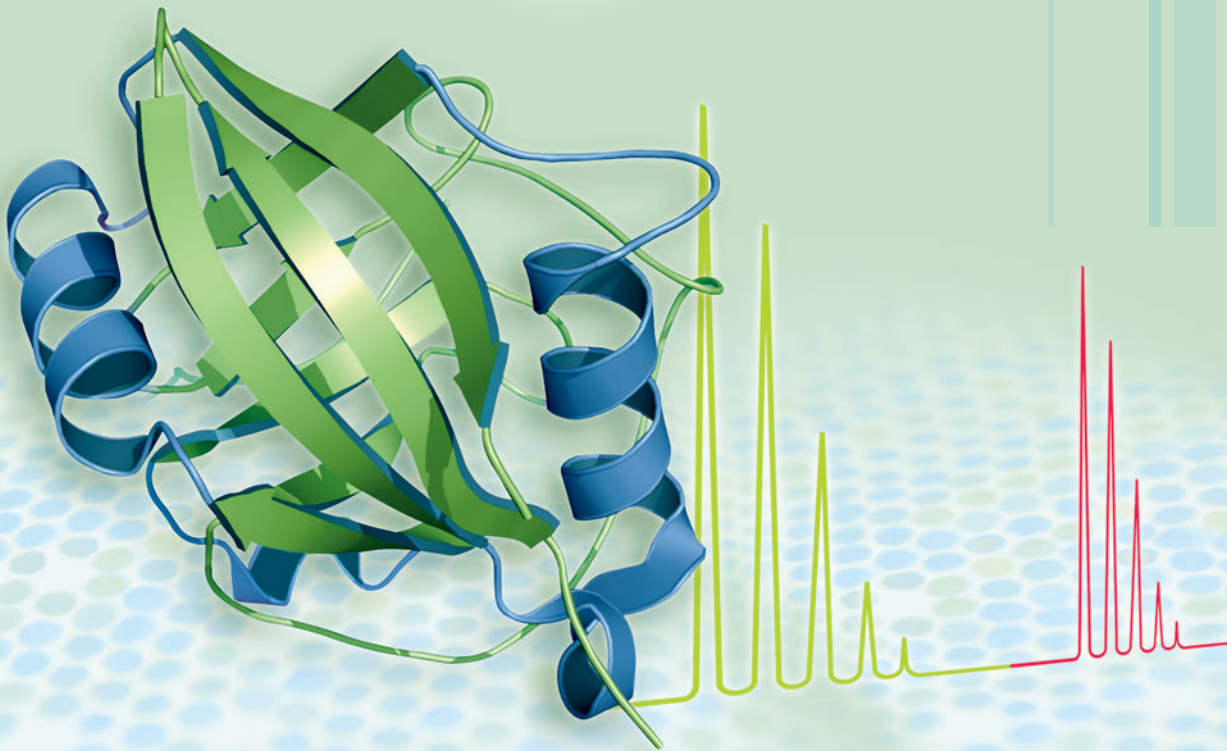




**Absolutely Quantified
Peptide Sets**



SIL Peptide Pools & Sets

- ❖ **Ready-to-use for mass spectrometry**
- ❖ **Lowest price and fast delivery**
- ❖ **Custom and catalog standard peptides**
- ❖ **Up to 1000 peptides in one peptide pool**
- ❖ **Reference peptides for important proteins**
- ❖ **New dimension for multiplexed quantification**

Contact us for
further information:
peptide@jpt.com

Stable Isotope Labeled Peptide Pools & Sets

SpikeMix™	Price
SpikeMix™ ABRF (cross-species standard) 1000 peptides for human, mouse & rat proteins	\$ 164
SpikeMix™ Cytokines (for 13 different species) 54-461 peptides for 25-361 cytokines	\$ 446
SpikeMix™ Tumor Associated Antigens 252 peptides for 61 tumor associated antigens	\$ 446
SpikeMix™ Kinase Activation Loops Over 400 phosphorylated & non-phosphorylated peptides from kinase activation loops	\$ 990
SpikeMix™ Human Peptide Hormones 552 peptides for 108 hormones & precursors	\$ 1790
SpikeMix™ CEFT CD8 32 HLA restricted T-cell epitopes of CMV, EBV, Influenza & Clostridium	\$ 250
Absolutely Quantified SpikeTides™ Set	Price
SpikeTides™ Set Metabolic Enzymes (quantified) 51 peptides for 24 enzymes involved in central energy metabolism	\$ 4990
SpikeTides™ Set Histones (quantified) 37 peptides for Histone H3 with & w/o modifications	\$ 1440
Custom SpikeMix™	Price / Peptide
SpikeMix™ Stable isotope labeled proteotypic peptides mixed and aliquoted according to your specifications	from \$ 8.50

Selected References & Application Notes

- ➔ *"Development of a Multiplexed Targeted SRM Assay for NCI's Top Tumor Associated Antigens"*
Soderblom, Application Note (2015)
- ➔ *"Multiple Nutrient Stresses at Intersecting Pacific Ocean Biomes Detected by Protein Biomarkers"*
Saito et al., Science (2014)
- ➔ *"Immunocapture-selected Reaction Monitoring Screening Facilitates the Development of ELISA for the Measurement of Native TEX101 in Biological Fluids"*
Korbakis et al., Mol Cell Proteomics (2015)
- ➔ *"Development & Characterization of SpikeMix™ ABRF (Cross-Species Standard) Consisting of 1,000 Stable Isotope Labeled Peptides"*
Colangelo, Application Note (2014)